

Trans-Atlantic dialogues: 1

Housing First

Psychologically Informed Environments

Trauma-Informed Care

Pre-Treatment

Systems change brokers

Housing First

Rapid (re-)housing

Voluntaristic support model

Committed staff support

Harm reduction vs abstinence

Focus on the most severe

+ Strong evidence base

Psychologically Informed Environments

A Psychological Model

The Built Environment

Staff Training & Support

Managing relationships/ rules of engagement

Evidence-generating practice change

+ Reflective Practice

Trauma Informed Care

Awareness of the nature &
expression of past trauma

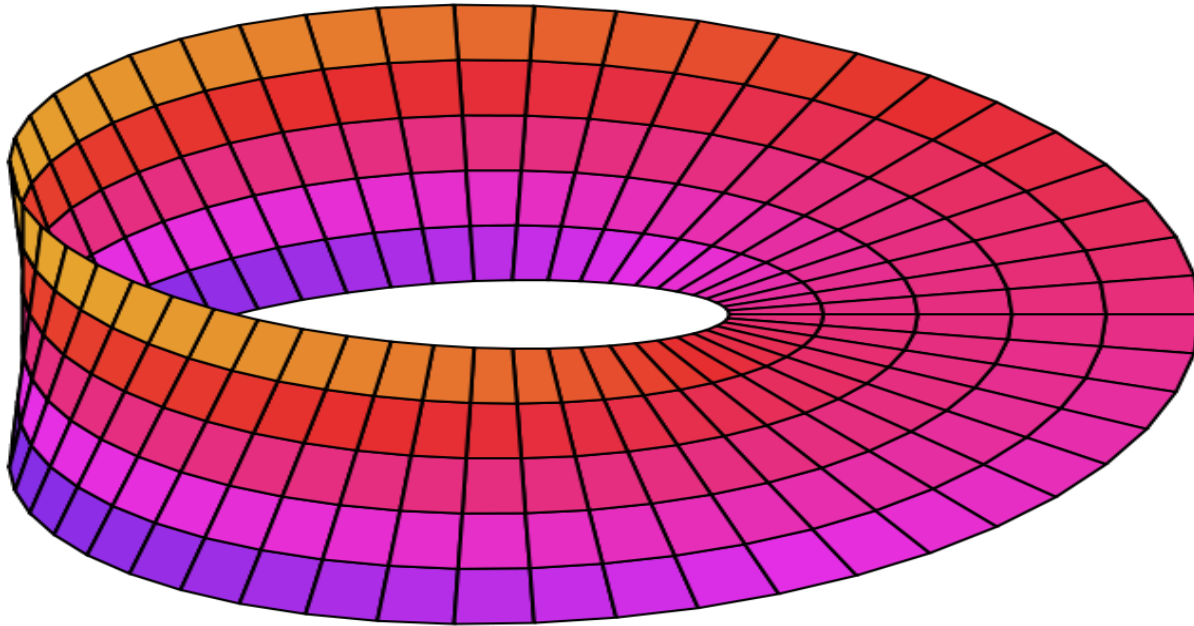
An emphasis on safety

Opportunities to rebuild control

A 'strengths-based' approach

+ Any other key features?

PIEs & TIC?



By Krishnavedala –
Own work, CC BY-SA 3.0,
<https://commons.wikimedia.org/w/index.php?curid=15278313>

Pre-Treatment

Rapid (re-)housing)

Voluntaristic support philosophy

Committed staff support

Harm reduction vs abstinence

“Get where the client is at”

System Change Brokers

A small cohort & keyworker team

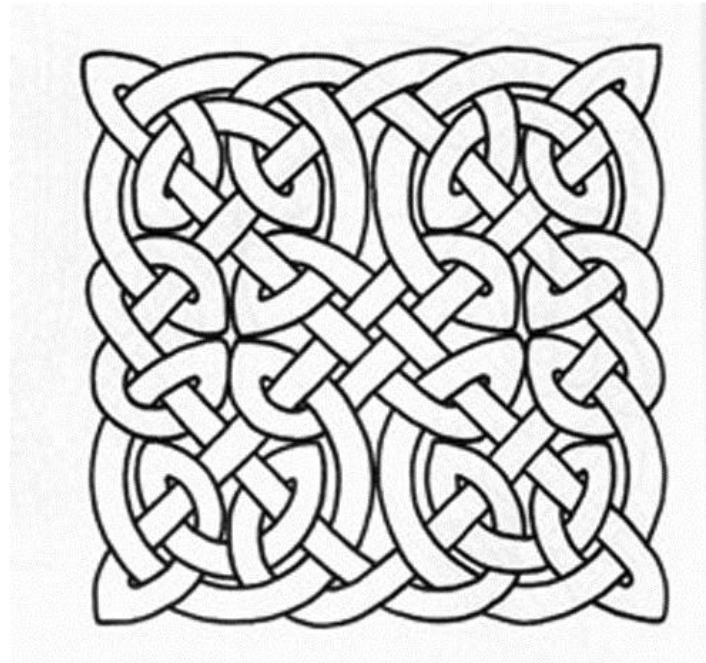
Inter-agency ownership of lessons

Action learning & feedback

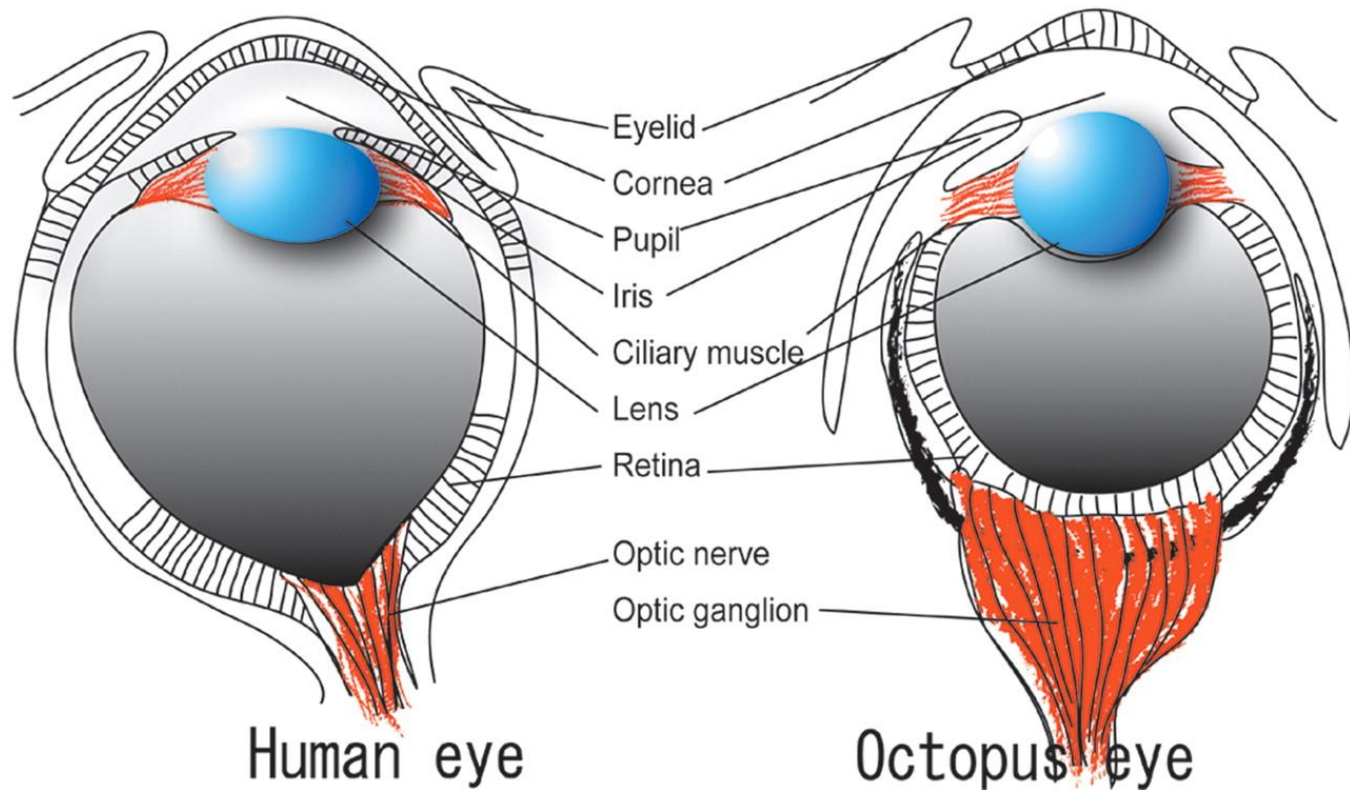
Systemic Exclusion

A social model of disability

Inter-connectivity?



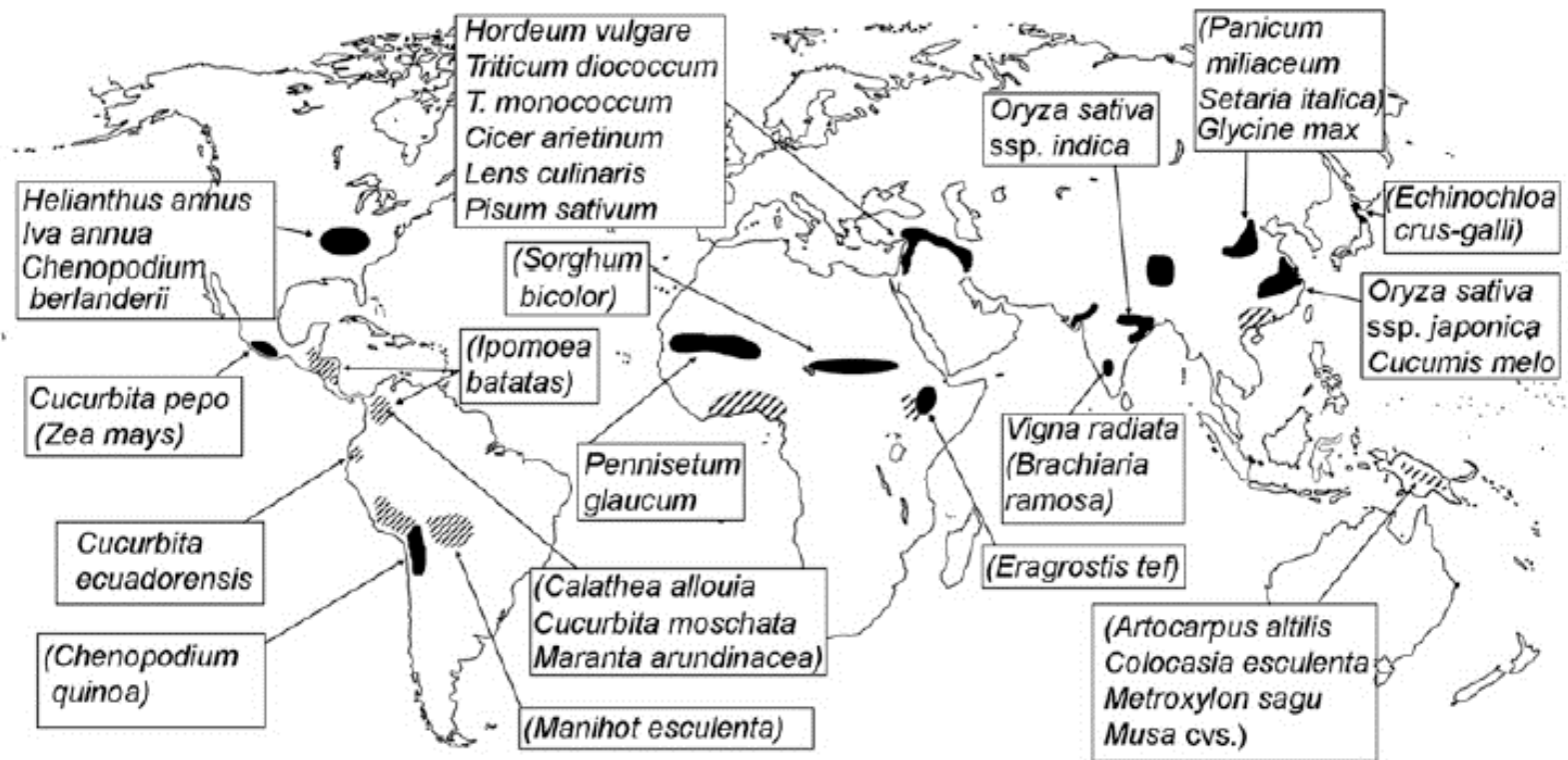
Convergent evolution?



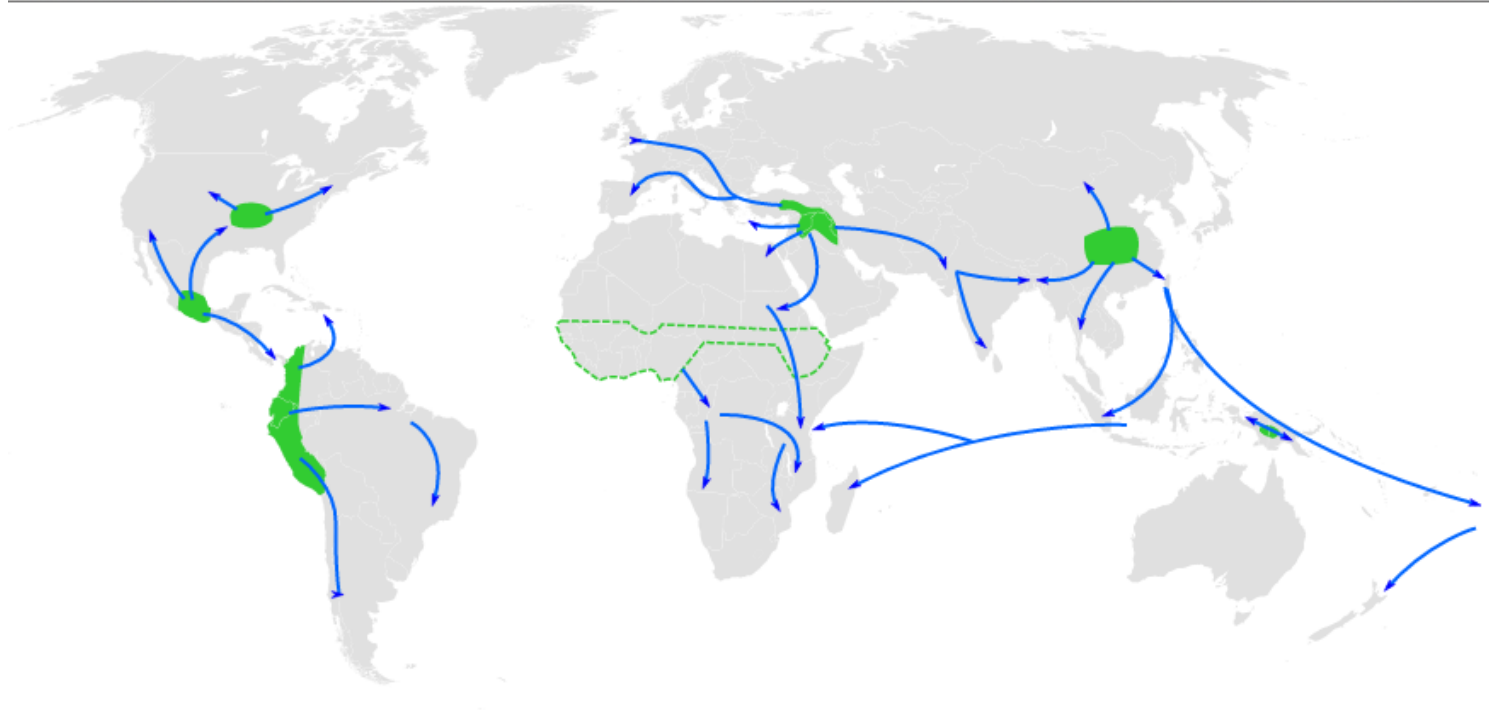
Cultural transmission?



Independent local development



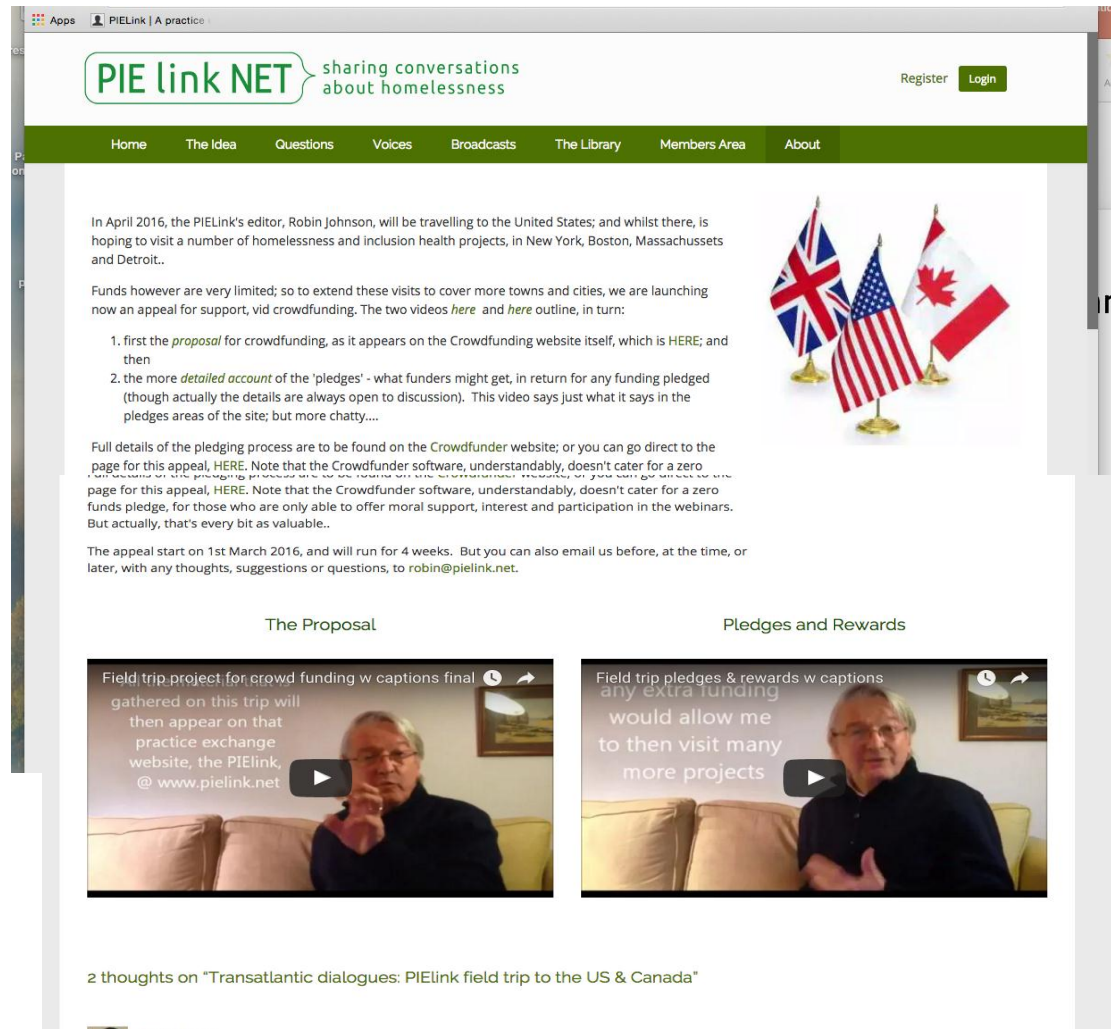
Local adaptations?



Trans-Atlantic dialogues: 2



Trans-Atlantic dialogues: 3



The screenshot shows the homepage of the PIE link NET website. The header features the logo "PIE link NET" with the tagline "sharing conversations about homelessness". Navigation links include Home, The Idea, Questions, Voices, Broadcasts, The Library, Members Area, and About. A green bar at the top right contains "Register" and "Login" buttons.

The main content area has a green background. It features a text block on the left and an image of three flags (UK, US, and Canada) on the right. The text block contains the following information:

In April 2016, the PIELink's editor, Robin Johnson, will be travelling to the United States; and whilst there, is hoping to visit a number of homelessness and inclusion health projects, in New York, Boston, Massachusetts and Detroit..

Funds however are very limited; so to extend these visits to cover more towns and cities, we are launching now an appeal for support, via crowdfunding. The two videos [here](#) and [here](#) outline, in turn:

1. first the [proposal](#) for crowdfunding, as it appears on the Crowdfunder website itself, which is [HERE](#); and then
2. the more [detailed account](#) of the 'pledges' - what funders might get, in return for any funding pledged (though actually the details are always open to discussion). This video says just what it says in the pledges areas of the site; but more chatty....

Full details of the pledging process are to be found on the Crowdfunder website; or you can go direct to the page for this appeal, [HERE](#). Note that the Crowdfunder software, understandably, doesn't cater for a zero funds pledge, for those who are only able to offer moral support, interest and participation in the webinars. But actually, that's every bit as valuable..

The appeal start on 1st March 2016, and will run for 4 weeks. But you can also email us before, at the time, or later, with any thoughts, suggestions or questions, to robin@pielink.net.

Below the text, there are two video thumbnails:

- The Proposal**: A video titled "Field trip project for crowd funding w captions final" showing a man speaking.
- Pledges and Rewards**: A video titled "Field trip pledges & rewards w captions any extra funding would allow me to then visit many more projects" showing the same man speaking.

At the bottom, there is a comment section with the text: "2 thoughts on 'Transatlantic dialogues: PIElink field trip to the US & Canada'" data-bbox="211 286 789 1000"/>