

Homeless and Vulnerable Children: An International Perspective

Panos Vostanis

Professor of Child Psychiatry

pv11@le.ac.uk

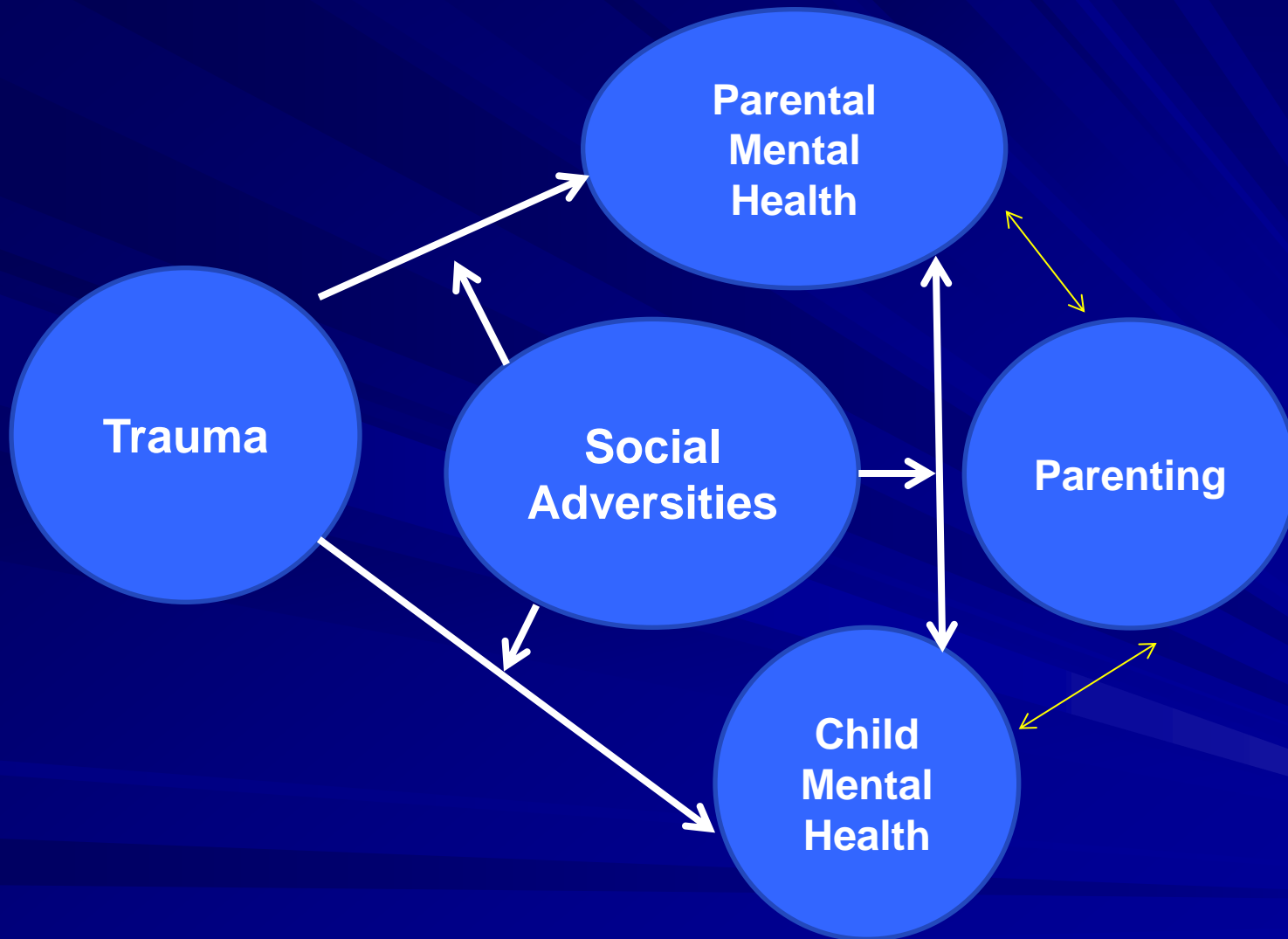
www.wacit.org



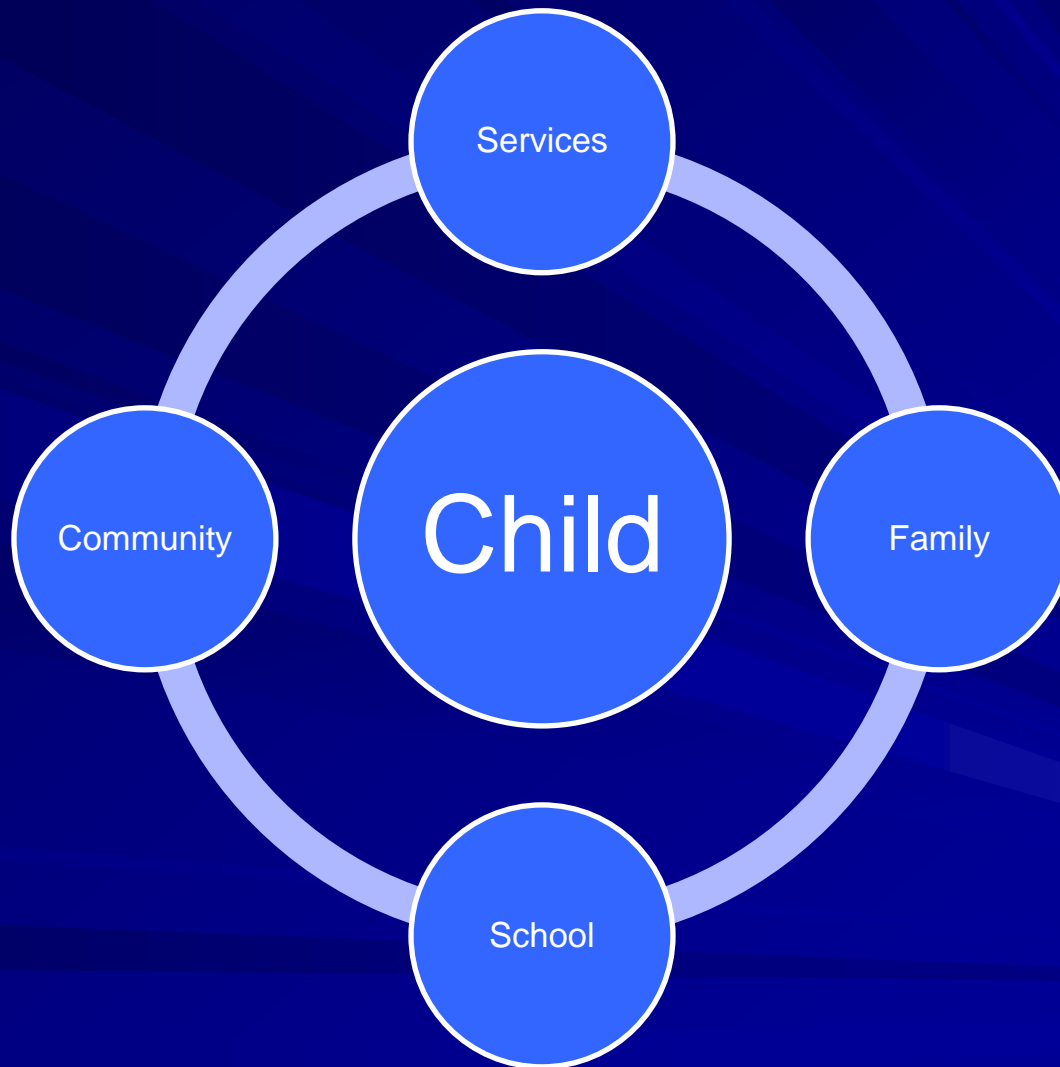
Evidence on child vulnerability and mental health

- Mechanisms of impact
- Risk and protective factors
- Emerging interventions
- Research and service gaps

How trauma impacts on child mental health



Ecological framework



Characteristics of homeless families

Mothers (N=113)

- Domestic violence: 56%
- Violent neighbours: 29%
- Hx of sexual abuse: 45%
- Poor social supports
- Mental health need 49% (predicted by abuse)
- Mental health contact (previous year): 13%

Children (N=249)

- Mean age 7.1 years
- Reported abuse: 9.6%
- Delayed communication
- School/nursery: 35% (from 87%)
- Mental health needs: 28% (predicted by maternal mental health)
- Mental health contact (previous year): 0.8%

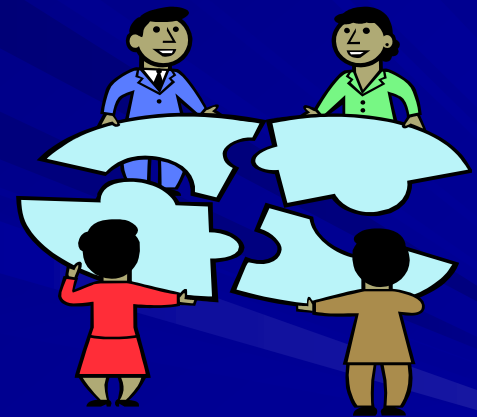
' I dream about it. I get pictures in my mind when I go to bed. Usually dad grabbing mum by the neck. I feel frightened and wish I could have done more for mum.'

8-year-old homeless girl

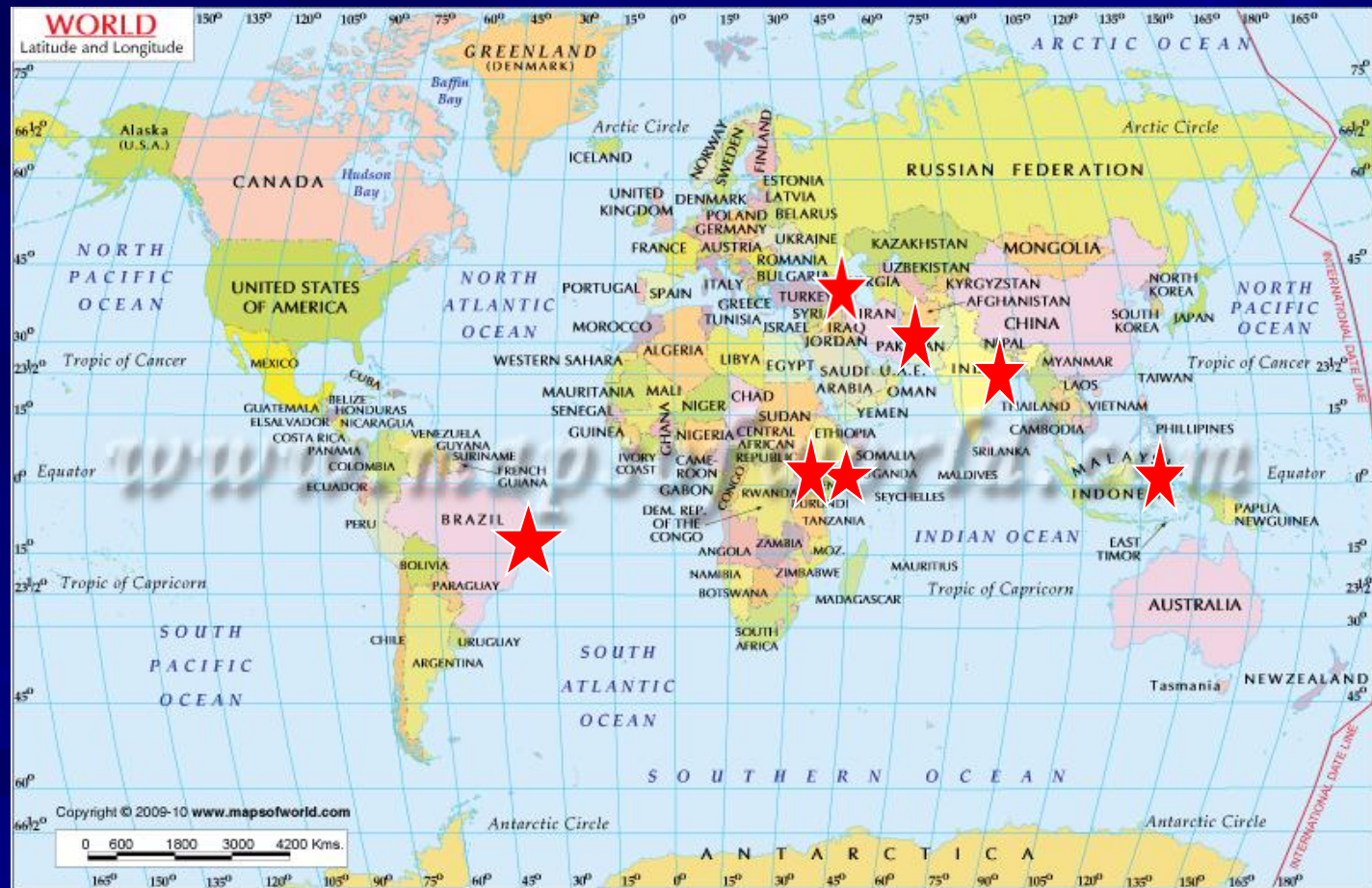


How interventions and services should reflect children's needs

- Integration (wrap - around)
- Direct access
- Engagement
- Flexibility
- Skills in applied therapies
- Consultation



“Who are the most vulnerable children in your country”?



World Awareness for Children in Trauma (WACIT)

www.wacit.org

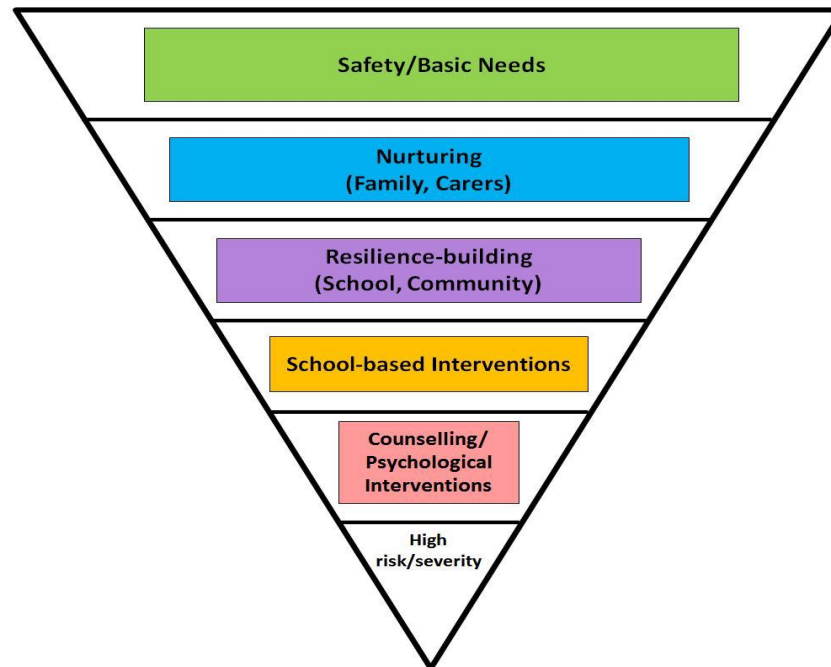


The Trail Blazer: Looking for Hope

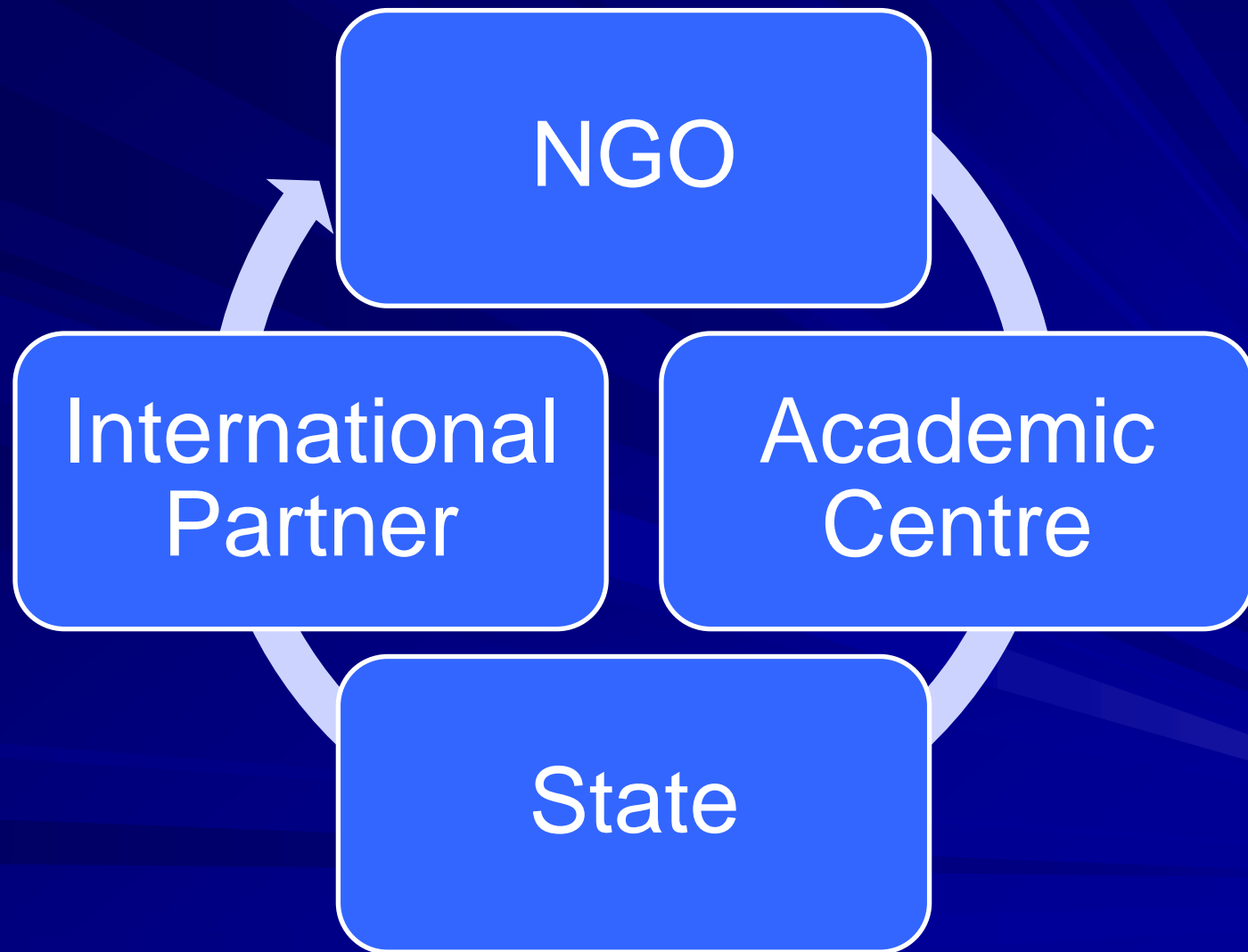


Building a psychosocial model for children in trauma

Emerging NGO Model of Psychosocial Interventions for Children in Trauma
(particularly in the absence of specialist services)



Towards a child trauma organizational model



WACIT Case Study 1

Turkey



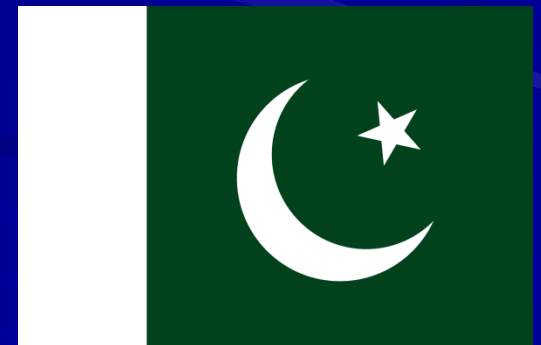
WACIT Case Study 2

Indonesia



WACIT Case Study 3

Pakistan



The Future

- Revisit own and agency role in relation to model
- Strategy
- Realistic and achievable goals

