



Sharing Stories, Building Hope

Mental Health Project for Bradford
Child Asylum Seekers and Refugees

Dr Jessica Keeble and Sadhana Patel



Child A

<https://pixabay.com/photos/desperate-sad-depressed-feet-hands-2293377/>

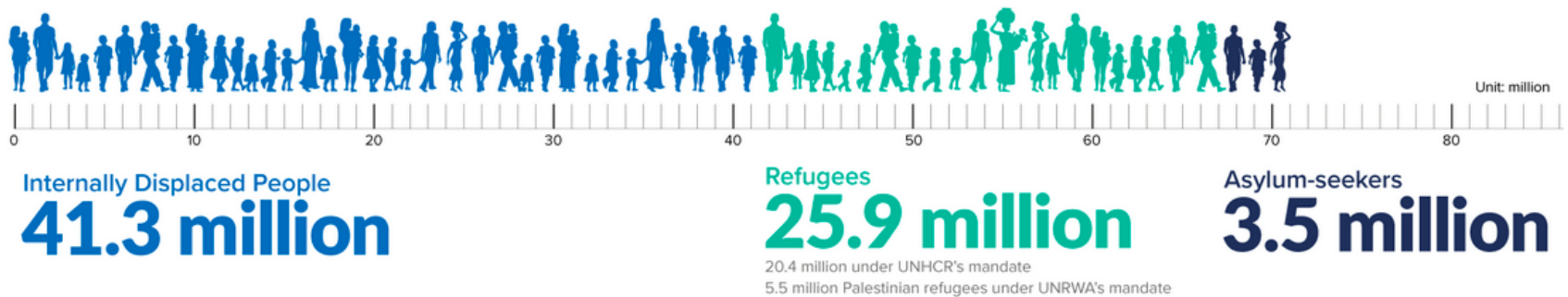


Child B

<https://pixabay.com/photos/black-and-white-road-morning-3864280/>

2018

70.8 million forcibly displaced people worldwide



<https://www.unhcr.org/uk/figures-at-a-glance.html> [accessed 12/2/20]

People who originally came to the UK to seek asylum made up an estimated 0.6% of the UK population in 2018

<https://migrationobservatory.ox.ac.uk/resources/briefings/migration-to-the-uk-asylum/> [accessed 12/2/20]



Before migration

<https://pixabay.com/illustrations/war-refugees-children-help-953245/>



During migration

<https://pixabay.com/photos/boat-water-refugee-escape-asylum-998966/>



After migration

<https://pixabay.com/photos/migration-integration-migrants-3129340/>



Unaccompanied child asylum seekers

<https://pixabay.com/photos/fence-men-refugee-integration-3585348/>



Mental health problems

<https://pixabay.com/photos/girl-sad-desperate-lonely-sadness-3422711/>



Dispersal, detention and discrimination

<https://pixabay.com/photos/play-figures-green-blue-play-wood-4541727/>
<https://youngminds.org.uk/blog/how-seeking-asylum-and-being-detained-impacted-my-mental-health/>



Resilience

<https://pixabay.com/photos/resilience-sunflower-enforce-nature-4159761/>



Sharing Stories Building Hope

Bevan Healthcare CIC



Current service outline

<https://pixabay.com/vectors/counselor-icon-school-counselor-1294858/>

<https://pixabay.com/photos/pen-drawing-page-education-3727883/>

<https://pixabay.com/photos/countryside-landscape-hdr-nature-384624/>

<https://pixabay.com/illustrations/volunteer-hands-help-colors-2055010/>



Child A

<https://pixabay.com/photos/chinese-new-year-blessing-1959877/>



Child B

<https://pixabay.com/photos/graduation-future-university-cap-1695185/>

messages

“Believe what I say”

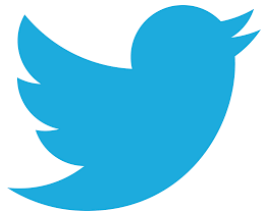
“Help me make more friends who are not
refugees or seeking asylum”

“Help me with this difficult process”

“Help me find my family”

“Help me understand UK laws”

social media links



@HouseBevan

@BevanCIC



Bevan Healthcare CIC



references

Slides 4 and 10:

- Walsh, P. W., “Migration to the UK: Asylum and Resettled Refugees” Migration Observatory briefing, COMPAS, University of Oxford, November 2019
- <https://www.gov.uk/government/publications/immigration-statistics-year-ending-december-2018/how-many-people-do-we-grant-asylum-or-protection-to>

Slides 4 and 8

- <https://www.unhcr.org/statistics/unhcrstats/5d08d7ee7/unhcr-global-trends-2018.html>

Slides 5-11:

- Fazal et al, 2012. Mental health of displaced and refugee children resettled in high income countries: risk and protective factors. Lancet. 379(9812), 266-282
- Fazal and Stein, 2002. The mental health of refugee children, Arch Dis Child 87, 366-370

Slide 5:

- Felitti et al, 1998. Relationship of Childhood Abuse and Household Dysfunction to Many of the Leading Causes of Death in Adults The Adverse Childhood Experiences (ACE) Study. Am J Prev Med 14 (4)

Slide 7:

- Kovacev, L., & Shute, R. 2004. Acculturation and social support in relation to psychosocial adjustment of adolescent refugees resettled in Australia. Int Journal of Behavioral Development, 28(3), 259–267

Slide 10:

- <https://migrationobservatory.ox.ac.uk/resources/briefings/uk-public-opinion-toward-immigration-overall-attitudes-and-level-of-concern/>